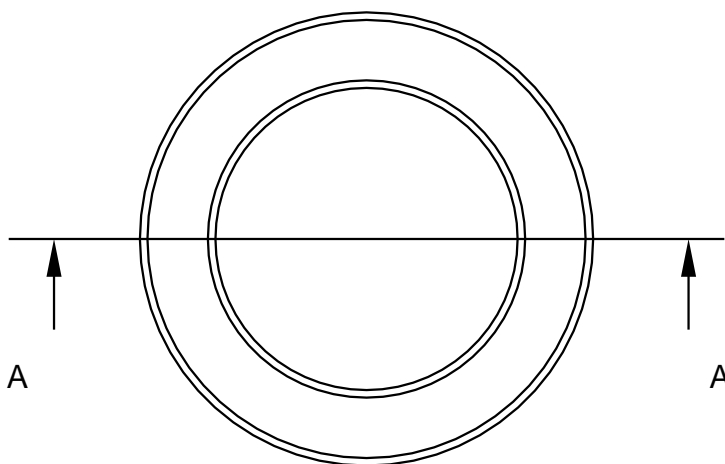
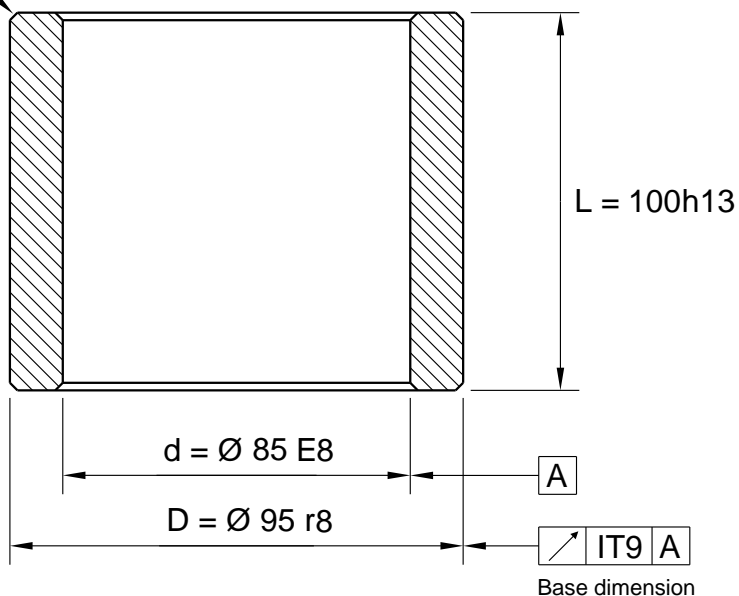


Max F = 0,8 x 45° (4x)



### Tolerance

Inside dia < 45,0 E7

Inside dia > 45,0 E8

Outside dia < 51,0 r7

Outside dia > 51,0 r8

All dimensions in mm

		General Tolerances acc to: <b>ISO 2768-mK</b>	File Name: 540-085X95X100_Schema.icd			Template created date 2015-12-17 14:07	
			Drawn by: <b>UP</b>	Weight g: <b>1142.18</b>	Material: <b>Sintered Bronze</b>		Drawing created date 2015-12-17
 www.lagermetall.se			Cylindrical bearing SS2991 <b>Sintered bronze Ø 85/95x100</b>			Sheet No: <b>1 ( 1 ) ...</b>	Rev. ...
						Doc. No: 540-085x95x100	