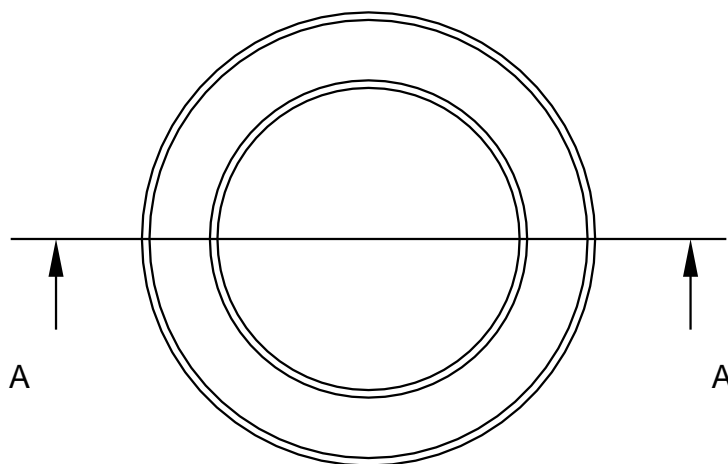
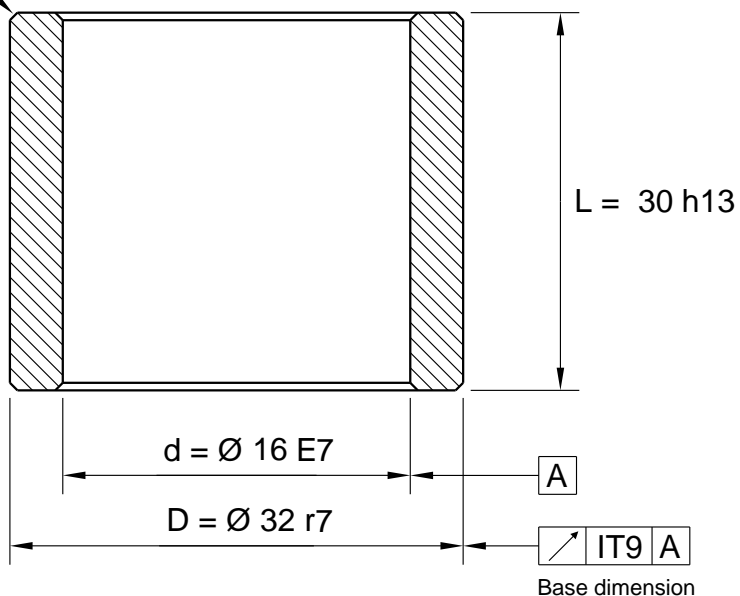


Max F = 0,8 x 45° (4x)



Tolerance


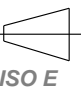
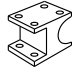

Inside dia < 45,0 E7

Inside dia > 45,0 E8

Outside dia < 51,0 r7

Outside dia > 51,0 r8

All dimensions in mm

 	 IRONCAD 2D drawing 3D model is available	General Tolerances acc to: ISO 2768-mK	File Name: 540-016X32X30_Schema.icd			Template created date 2015-12-17 14:07	
			Drawn by: UP	Weight g: 145.79	Material: Sintered Bronze	Drawing created date 2015-12-17	
 www.lagermetall.se			Cylindrical bearing SS2991 Sintered bronze Ø 16/32x30			Sheet No: 1 (1) ...	Rev. ...
						Doc. No: 540-016x32x30	