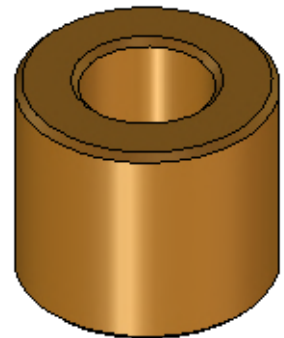
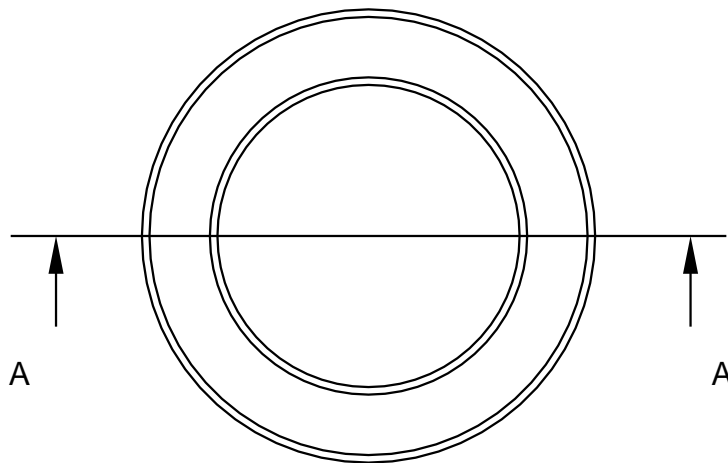
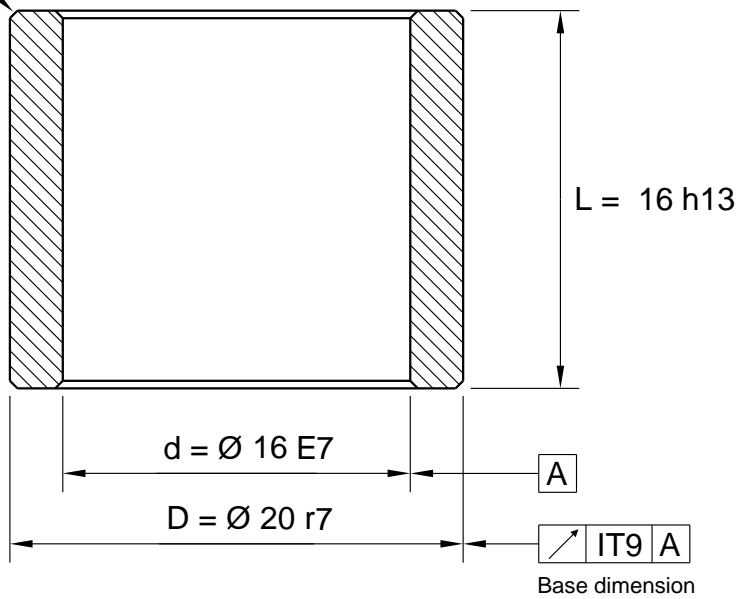


Max F = 0,4 x 45° (4x)



**Tolerance**

Inside dia < 45,0 E7

Inside dia > 45,0 E8

Outside dia < 51,0 r7

Outside dia > 51,0 r8

All dimensions in mm

This document and its contents are the exclusive property of Lagermetall AB, and may not be copied, reproduced, transmitted or communicated to a third part, or used for any purpose without written permission.

		General Tolerances acc to: <b>ISO 2768-mK</b>	File Name: 540-016X20X16_Schema.icd			Template created date 2015-12-17 14:07
			Drawn by: <b>UP</b>	Weight g: <b>14.51</b>	Material: <b>Sintered Bronze</b>	Drawing created date 2015-12-17
 www.lagermetall.se			Cylindrical bearing SS2991 <b>Sintered bronze Ø 16/20x16</b>			Sheet No: <b>1 ( 1 ) ...</b>
						Doc. No: 540-016x20x16