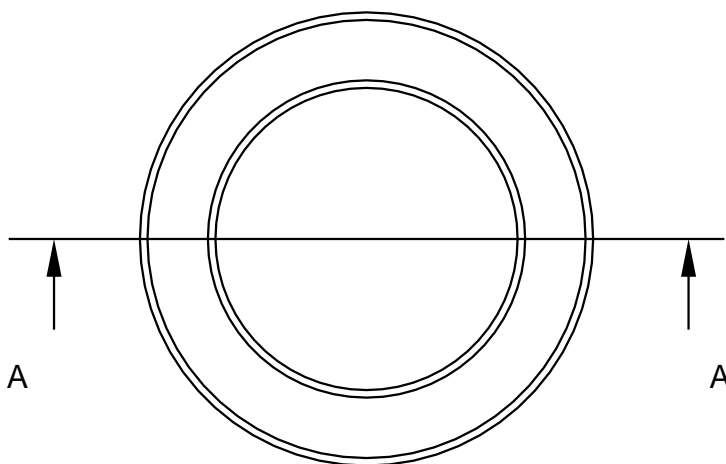
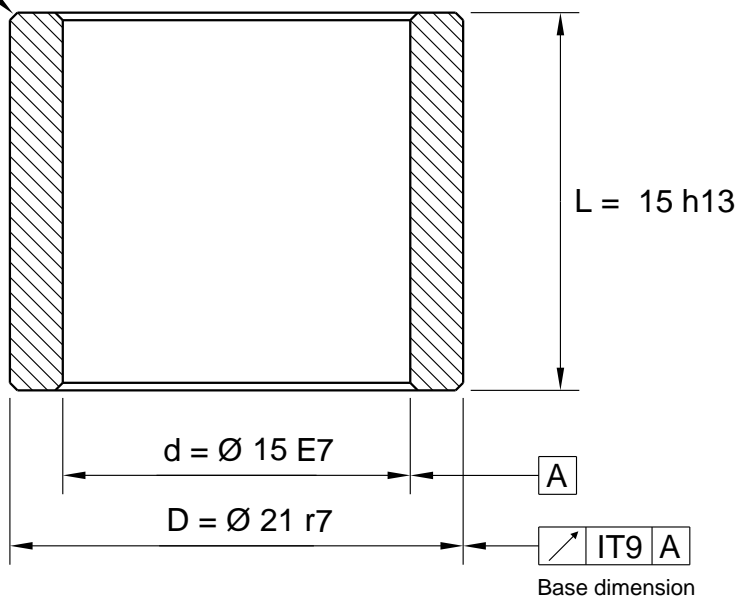


Max F = 0,6 x 45° (4x)



Tolerance

Inside dia < 45,0 E7

Inside dia > 45,0 E8

Outside dia < 51,0 r7

Outside dia > 51,0 r8

All dimensions in mm

| | | | | | | |
|------------------------|--|--|--|---------------------------|-------------------------------------|---|
| | | General Tolerances acc to: ISO 2768-mK | File Name: 540-015X21X15_Schema.icd | | | Template created date 2015-12-17 14:07 |
| | | | Drawn by: UP | Weight g: 20.28 | Material: Sintered Bronze | Drawing created date 2015-12-17 |
| www.lagermetall.se | | | Cylindrical bearing SS2991 Sintered bronze Ø 15/21x15 | | | Sheet No: 1 (1) ... |
| | | | | | | Doc. No: 540-015x21x15 |