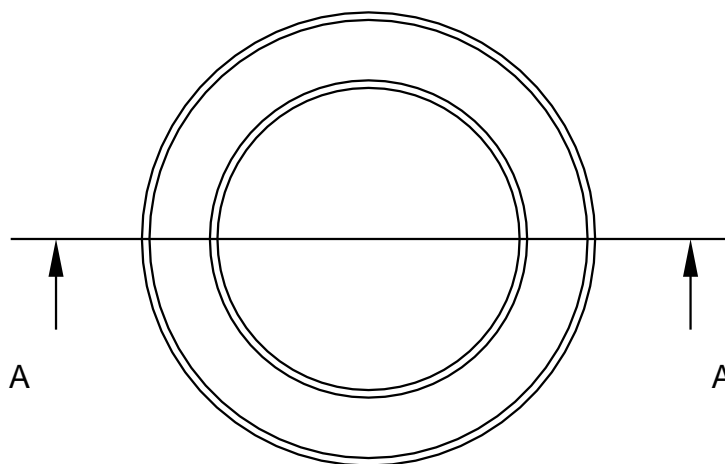
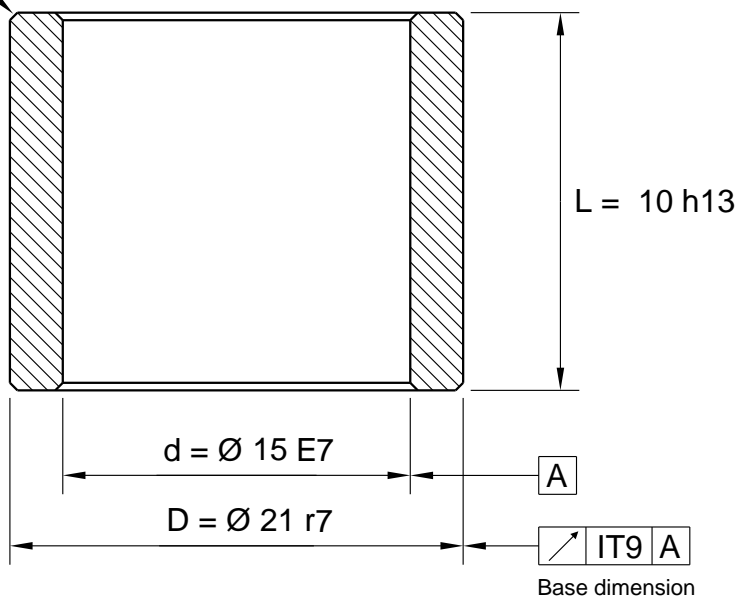


Max F = 0,6 x 45° (4x)



### Tolerance

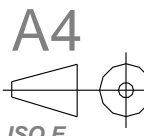
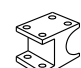

Inside dia < 45,0 E7

Inside dia > 45,0 E8

Outside dia < 51,0 r7

Outside dia > 51,0 r8

All dimensions in mm

	 IRONCAD 2D drawing 3D model is available	General Tolerances acc to:  ISO 2768-mK	File Name: 540-015X21X10_Schema.icd			Template created date 2015-12-17 14:07
			Drawn by: <b>UP</b>	Weight g: <b>13.41</b>	Material: <b>Sintered Bronze</b>	Drawing created date 2015-12-17
 www.lagermetall.se			Cylindrical bearing SS2991  Sintered bronze Ø 15/21x10			Sheet No: <b>1 ( 1 ) ...</b>
						Doc. No: 540-015x21x10