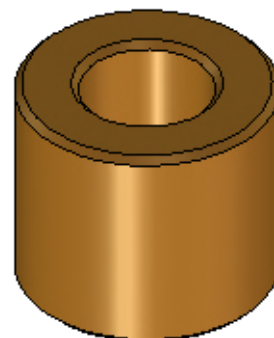
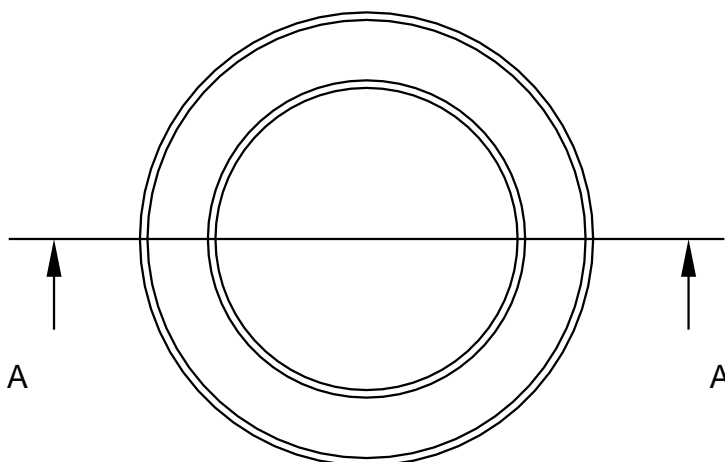
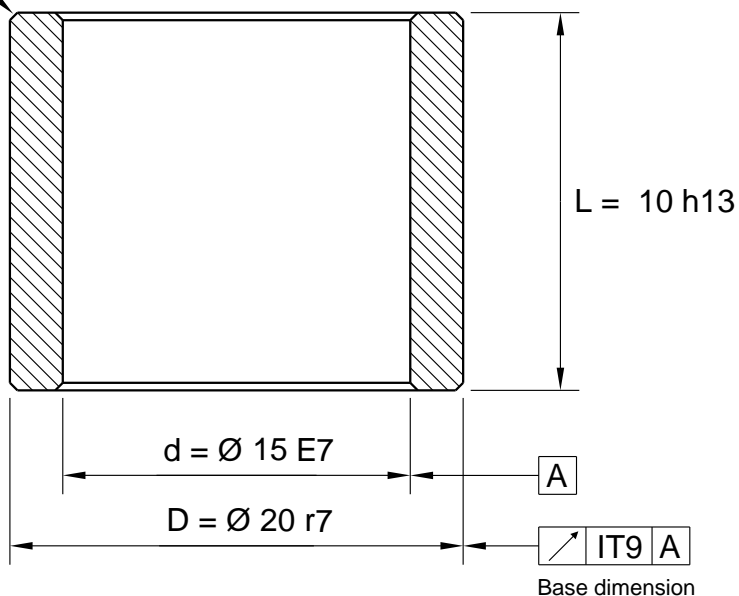


Max F = 0,4 x 45° (4x)



Tolerance

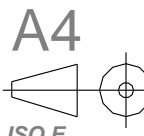
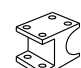

Inside dia < 45,0 E7

Inside dia > 45,0 E8

Outside dia < 51,0 r7

Outside dia > 51,0 r8

All dimensions in mm

 <p>ISO E</p>	 <p>IRONCAD 2D drawing 3D model is available</p>	<p>General Tolerances acc to: ISO 2768-mK</p>	<p>File Name: 540-015X20X10_Schema.icd</p>			<p>Template created date 2015-12-17 14:07</p>
			<p>Drawn by: UP</p>	<p>Weight g: 10.99</p>	<p>Material: Sintered Bronze</p>	<p>Drawing created date 2015-12-17</p>
 <p>www.lagermetall.se</p>			<p>Cylindrical bearing SS2991 Sintered bronze Ø 15/20x10</p>			<p>Sheet No: 1 (1) ...</p>
						<p>Doc. No: 540-015x20x10</p>